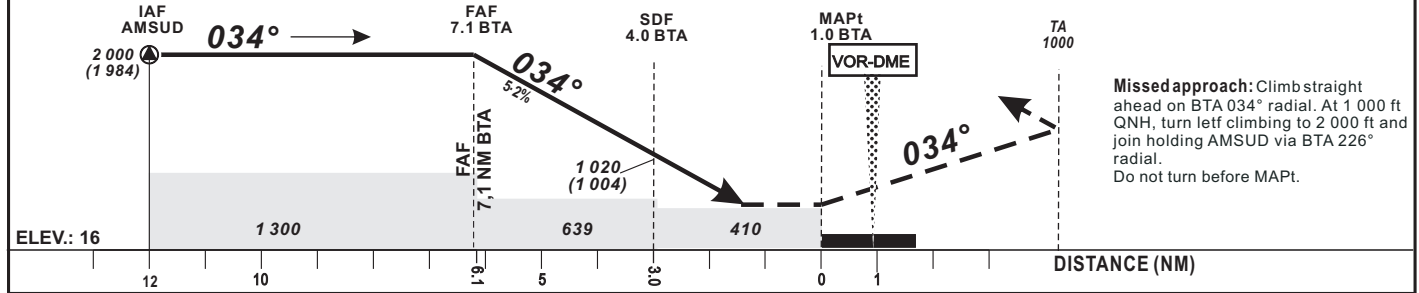


| Distance to THR 03 (NM) | FAF | 8 | 7 | 6 | 5 | 4 | 3 | 2 | 1 |
|-------------------------|-------|---|---|-------|-------|-------|-------|-----|-----|
| Altitude (ft) | 2 000 | | | 1 980 | 1 660 | 1 340 | 1 020 | 710 | 390 |



| CAT | VOR Z | | | | Circling (*) | | | | RVR for take-off CAT A - B - C : 400 CAT D : 400 |
|-----|-----------|-----------|-----|------|--------------|-----------|-----|------|---|
| | OCA (OCH) | MDA | MDH | RVR | OCA (OCH) | MDA | MDH | VIS | |
| A | 410 (394) | 410 (400) | | 1500 | 541 (525) | 550 (530) | | 1500 | Timing FAF/THR 6.1 NM KT MIN SEC KT MIN SEC 90 4 Min 04 140 2 Min 37 100 3 Min 40 150 2 Min 26 110 3 Min 20 160 2 Min 17 120 3 Min 03 170 2 Min 09 130 2 Min 49 180 2 Min 02 |
| B | 410 (394) | 410 (400) | | 1500 | 541 (525) | 550 (530) | | 1600 | |
| C | 410 (394) | 410 (400) | | 1800 | 781 (765) | 790 (770) | | 2400 | |
| D | 410 (394) | 410 (400) | | 2000 | 781 (765) | 790 (770) | | 3600 | |

Notes :- (*) Daytime only - OCH and MDH AAL.
 - Climbing sector: Between 247° and 190° BTA.
 - Inbound track offset 5° from runway centerline.

AMDT 12/18 : NORMALISATION